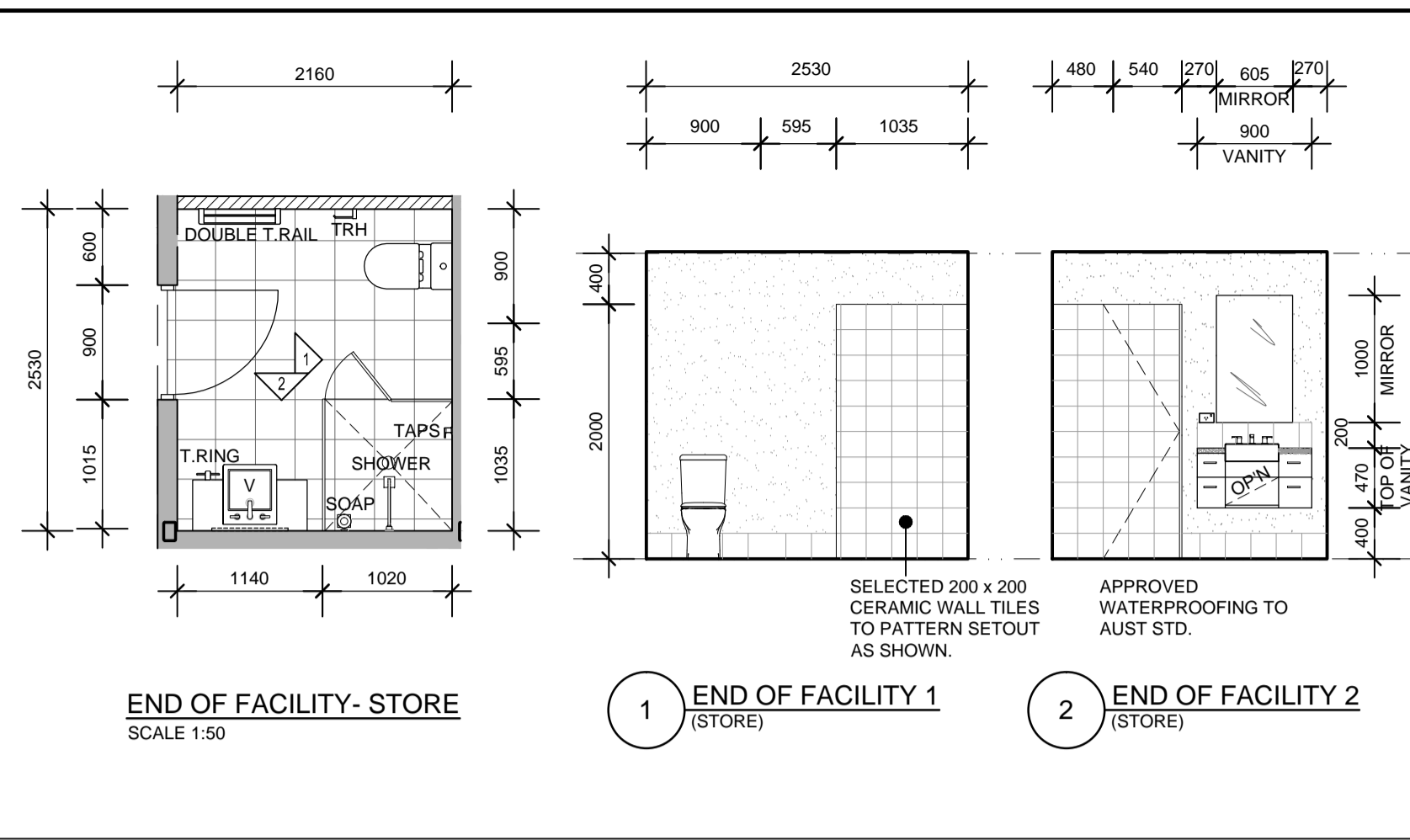


KITCHEN - UNIT 9  
SCALE 1:20

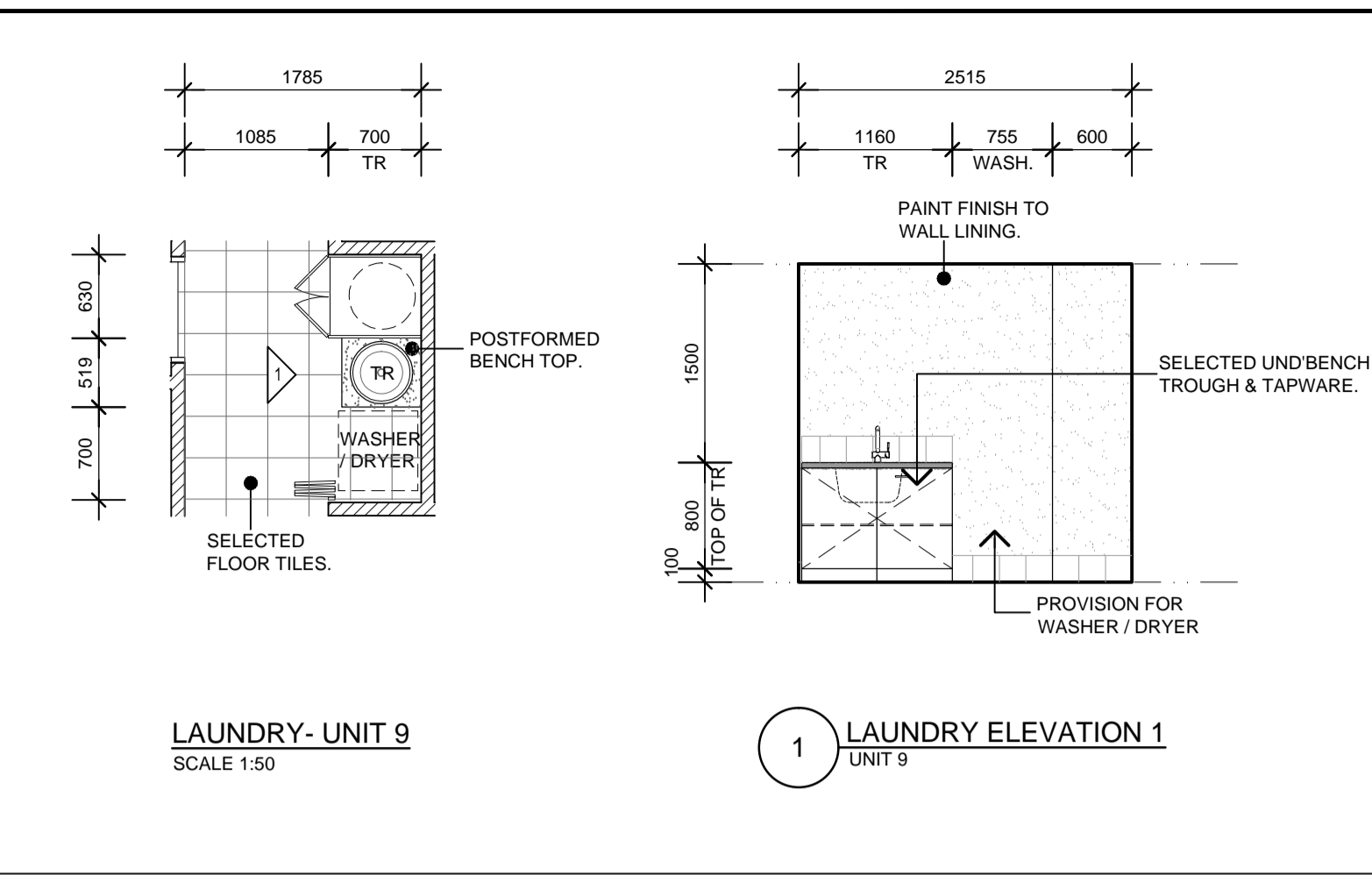
1 KITCHEN ELEVATION 1  
UNIT 9



END OF FACILITY - STORE  
SCALE 1:50

1 END OF FACILITY 1  
(STORE)

2 END OF FACILITY 2  
(STORE)

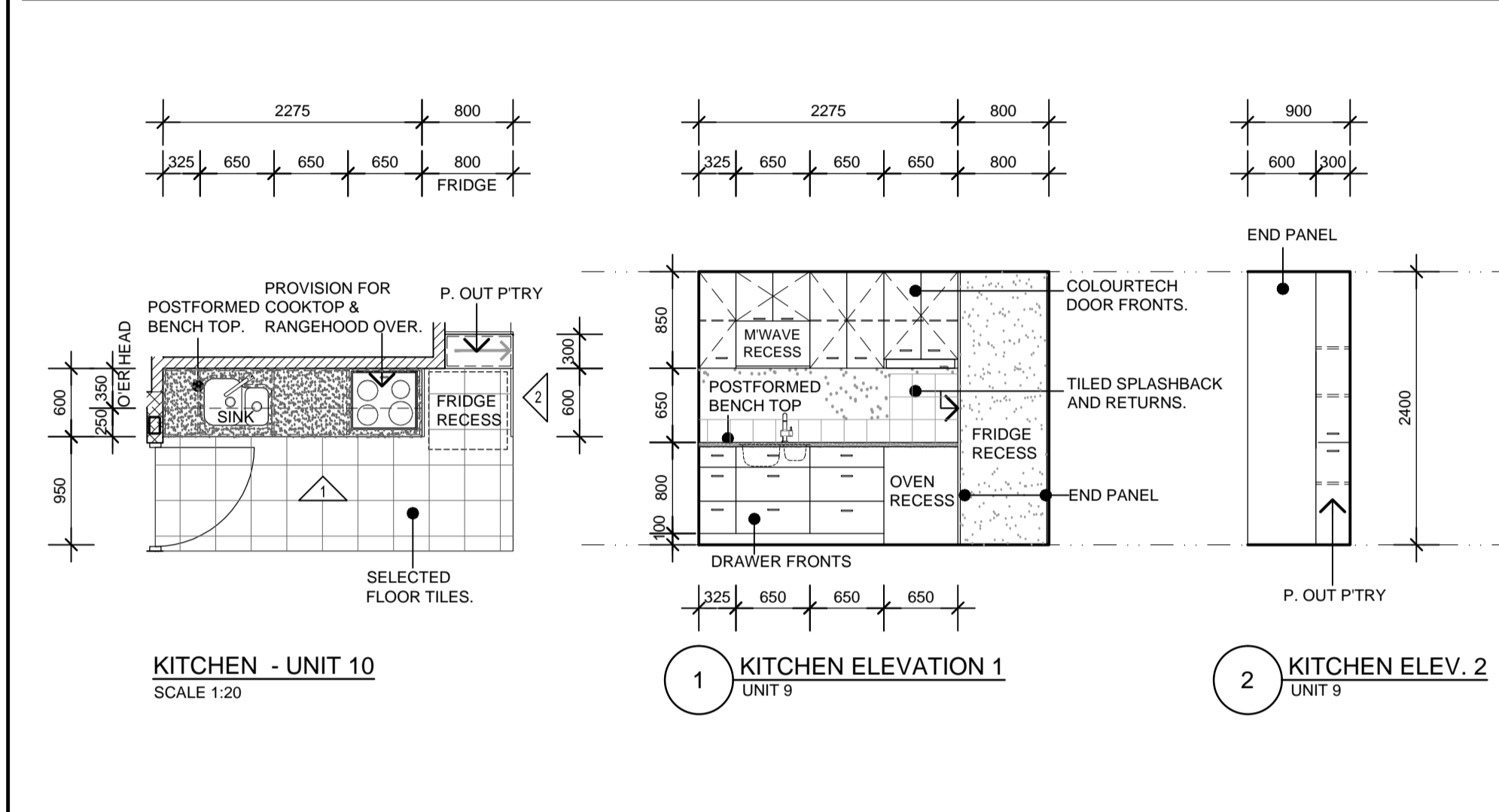


LAUNDRY - UNIT 9  
SCALE 1:50

1 LAUNDRY ELEVATION 1  
UNIT 9

Issue	By	Issue Description	Date
CT	DN	ISSUE FOR CONTRACT	19/08/11

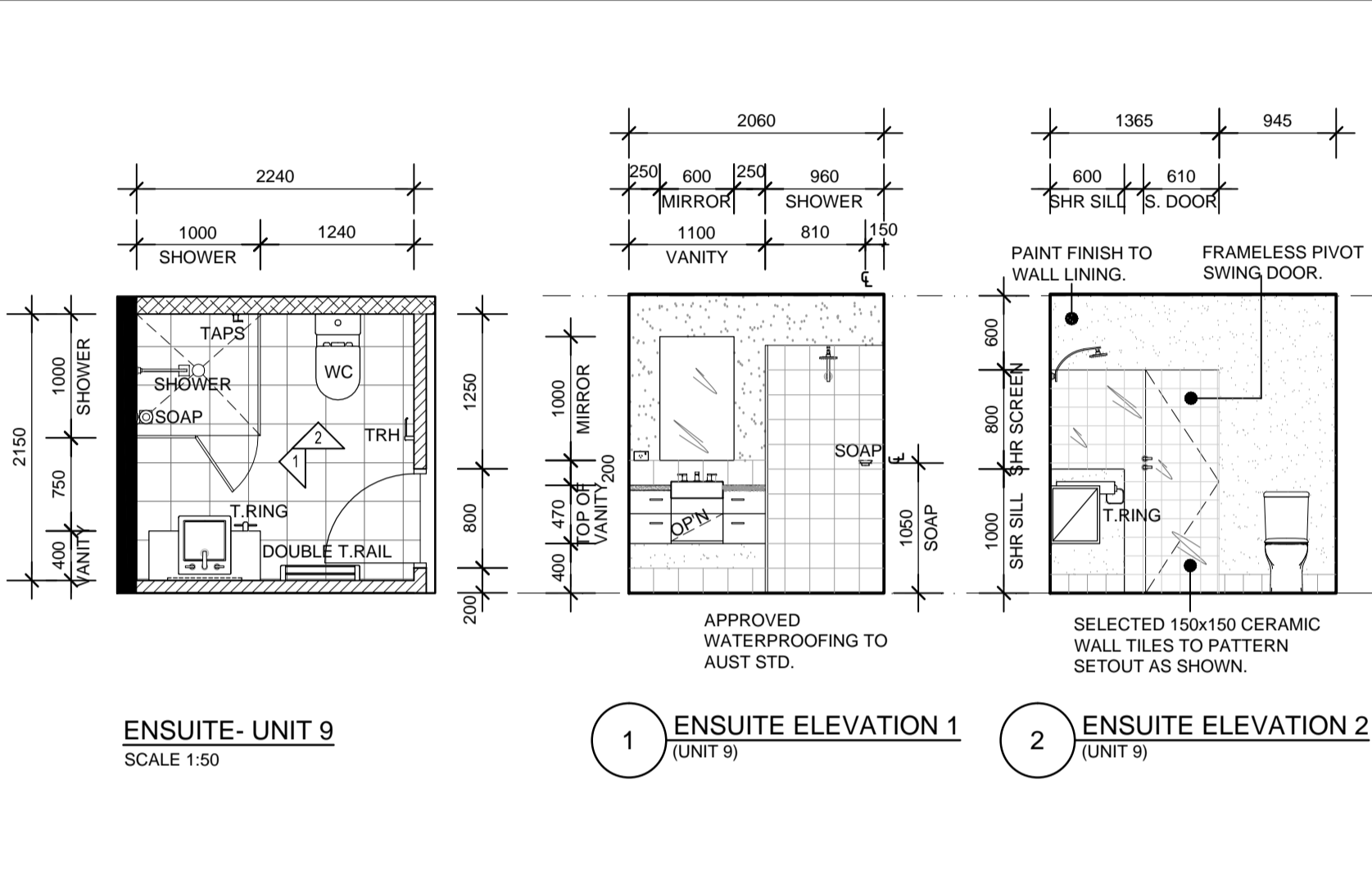
- NOTES**
- BUILDER TO CHECK ALL DIMENSIONS ON SITE PRIOR TO COMMENCING CONSTRUCTION.
  - ARCHITECTURAL DRAWINGS ARE TO BE READ IN CONJUNCTION WITH ALL RELEVANT CONSULTANTS DRAWINGS.
  - ALL BUILDING WORKS TO BE EXECUTED IN ACCORDANCE WITH AUSTRALIAN STANDARDS, BUILDING CODE OF AUSTRALIA, LOCAL & REGULATORY AUTHORITIES.
  - BUILDER TO NOTIFY ARCHITECT IMMEDIATELY OF ANY SERVICE LOCATION DISCREPANCIES OR CLASHES ON SITE. NO WORK TO COMMENCE UNTIL APPROVAL BY ARCHITECT IS GRANTED.
  - ALL EXTERNAL CLADDING, DOORS, WINDOWS ETC. MUST BE CAPABLE OF RESISTING THE ULTIMATE WIND PRESSURES AND IMPACT LOADS AS DEFINED IN AS 1170. REFER TO STRUCTURAL DRAWINGS FOR SITE DESIGN PARAMETERS.
  - CYCLONIC FIXING: ALL EXTERNAL ROOF / WALL SHEETING, WINDOWS / DOORS, BALUSTRADES / SCREENS, FENCES ETC. TO BE FIXED TO MEET REQUIREMENTS OF AS 1170. REFER TO MANUFACTURERS RECOMMENDATIONS / FIXING DETAILS TO SUIT THIS WIND REGION ( REGION D, TERRAIN CATEGORY 2).



KITCHEN - UNIT 10  
SCALE 1:20

1 KITCHEN ELEVATION 1  
UNIT 9

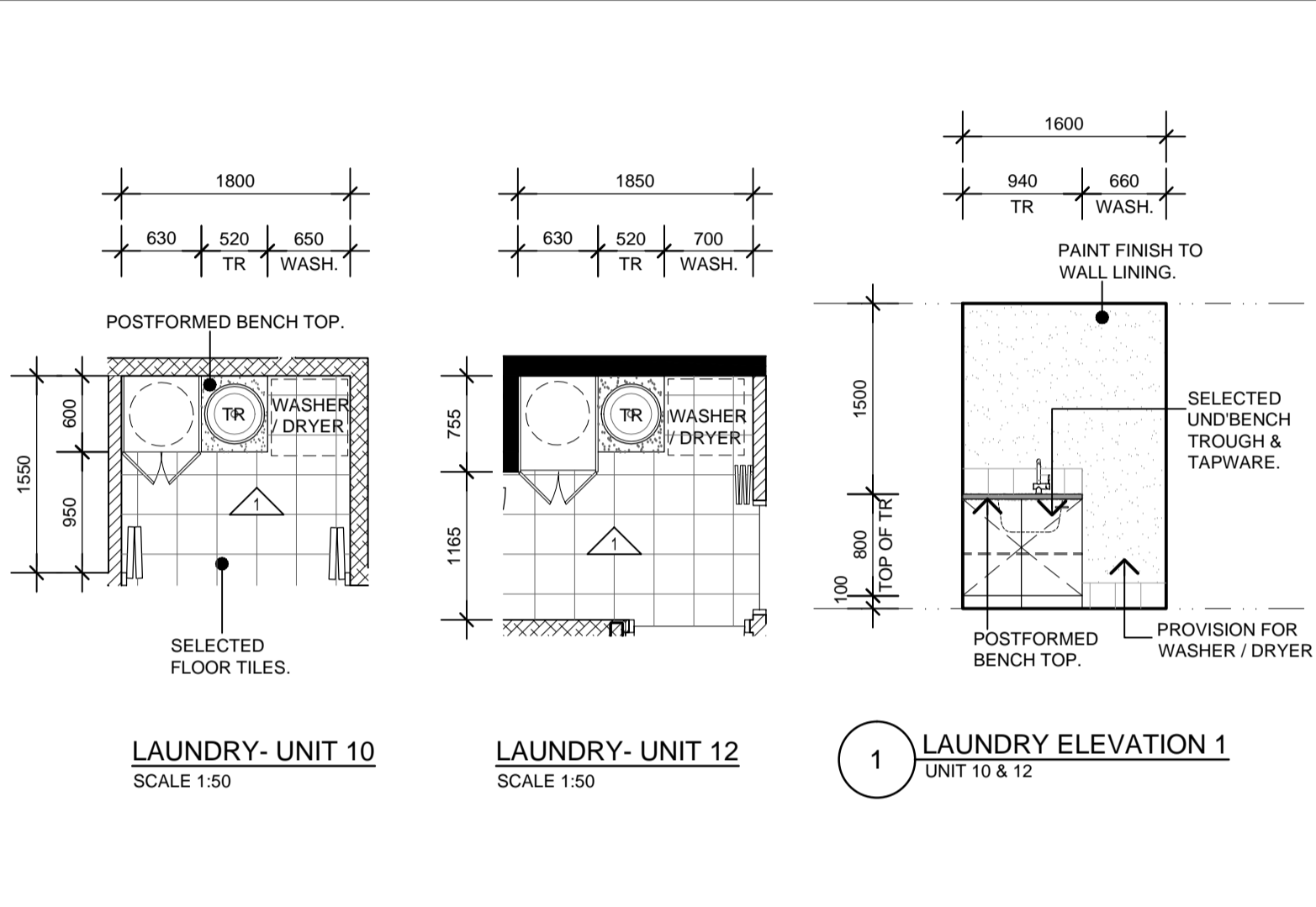
2 KITCHEN ELEV. 2  
UNIT 9



ENSUITE - UNIT 9  
SCALE 1:50

1 ENSUITE ELEVATION 1  
(UNIT 9)

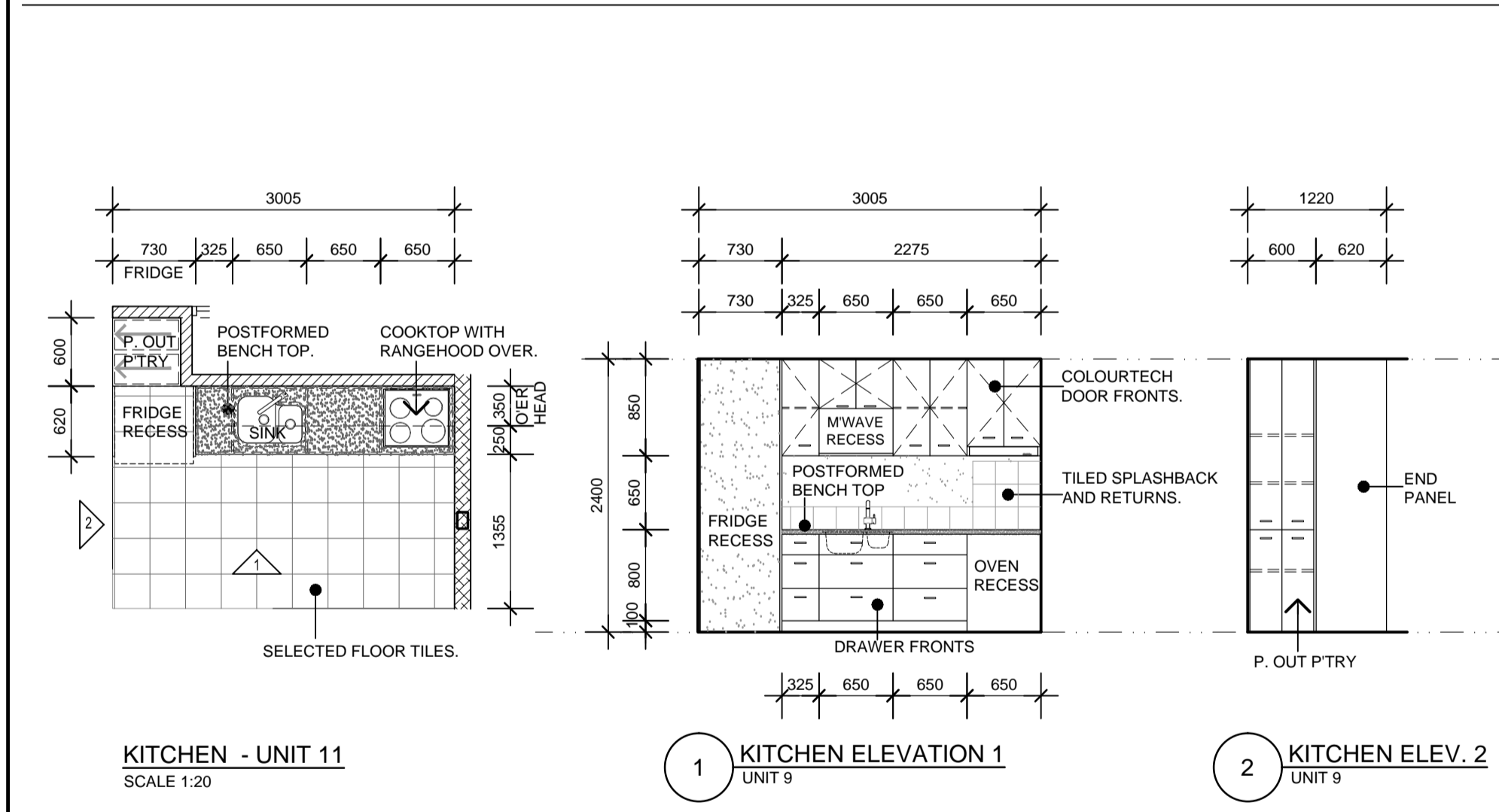
2 ENSUITE ELEVATION 2  
(UNIT 9)



LAUNDRY - UNIT 10  
SCALE 1:50

LAUNDRY - UNIT 12  
SCALE 1:50

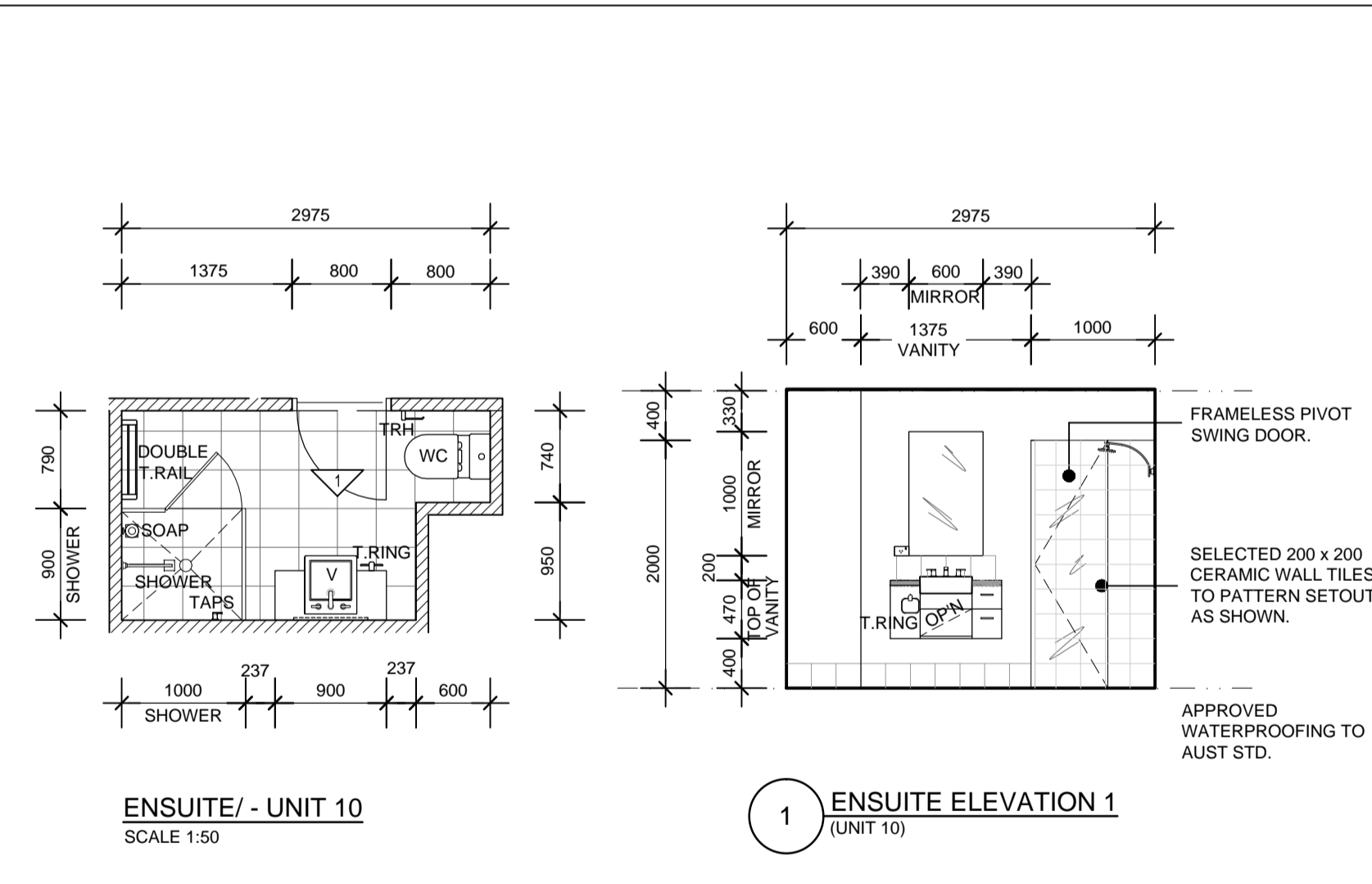
1 LAUNDRY ELEVATION 1  
UNIT 10 & 12



KITCHEN - UNIT 11  
SCALE 1:20

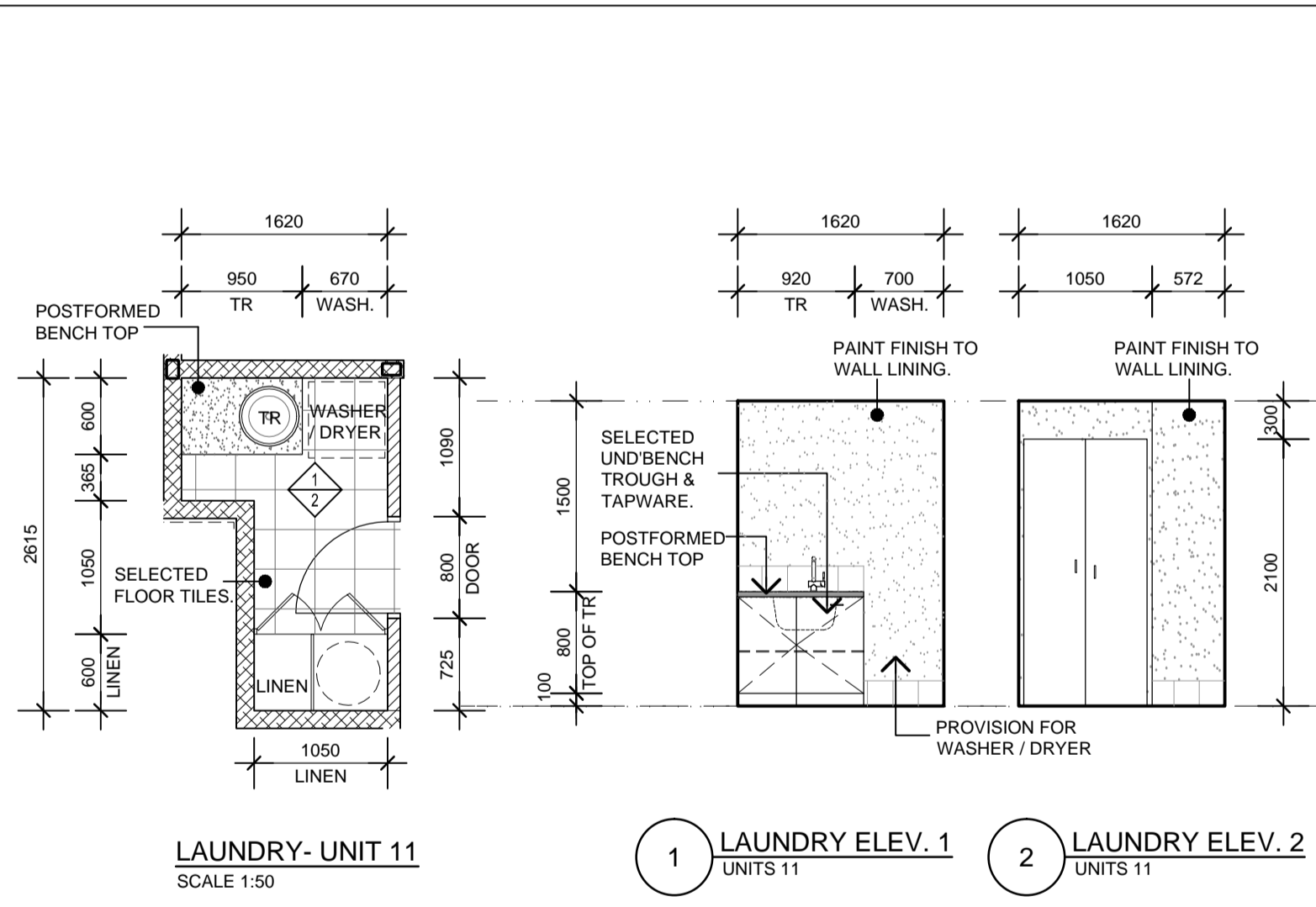
1 KITCHEN ELEVATION 1  
UNIT 9

2 KITCHEN ELEV. 2  
UNIT 9



ENSUITE / - UNIT 10  
SCALE 1:50

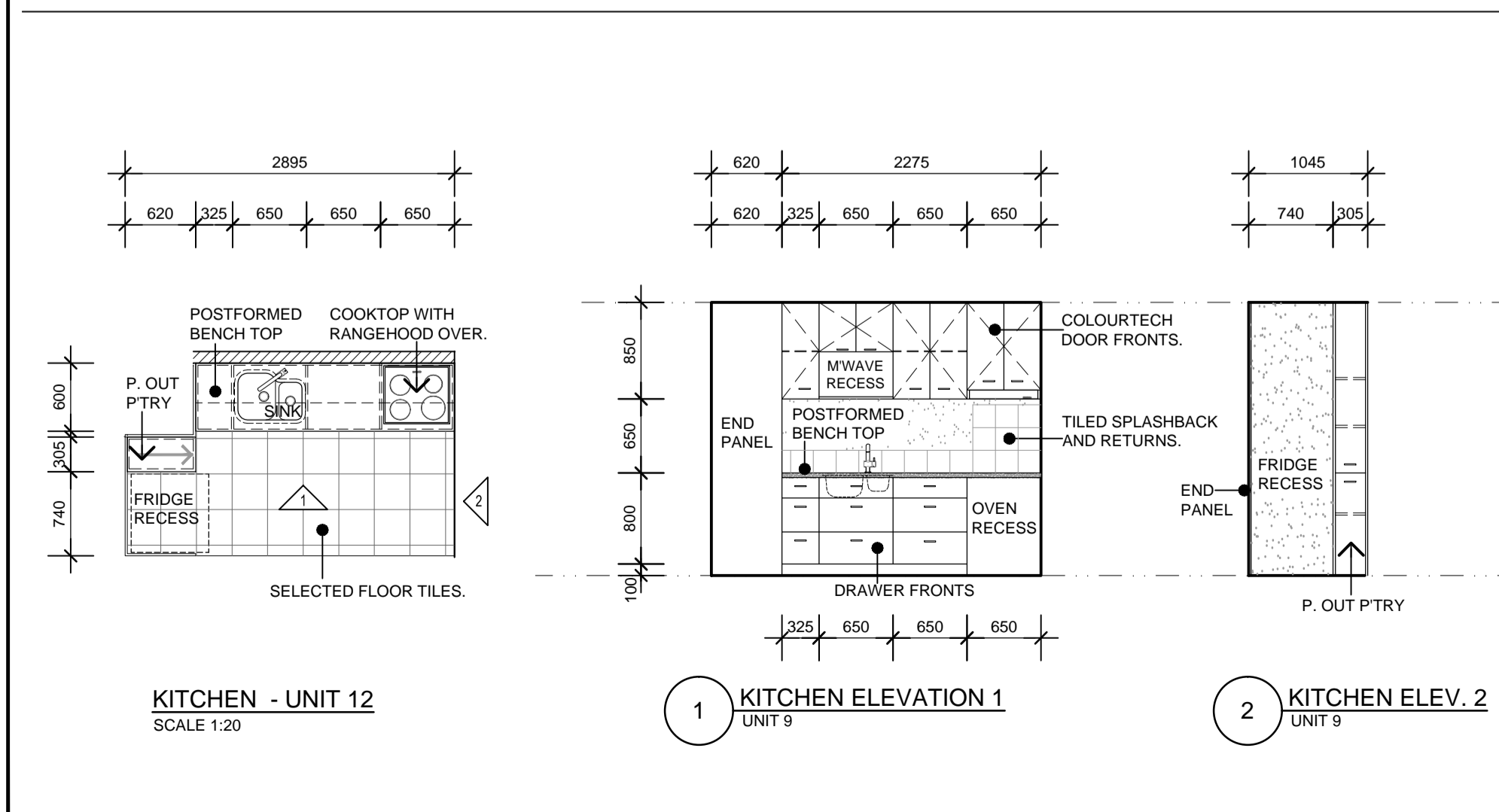
1 ENSUITE ELEVATION 1  
(UNIT 10)



LAUNDRY - UNIT 11  
SCALE 1:50

1 LAUNDRY ELEV. 1  
UNITS 11

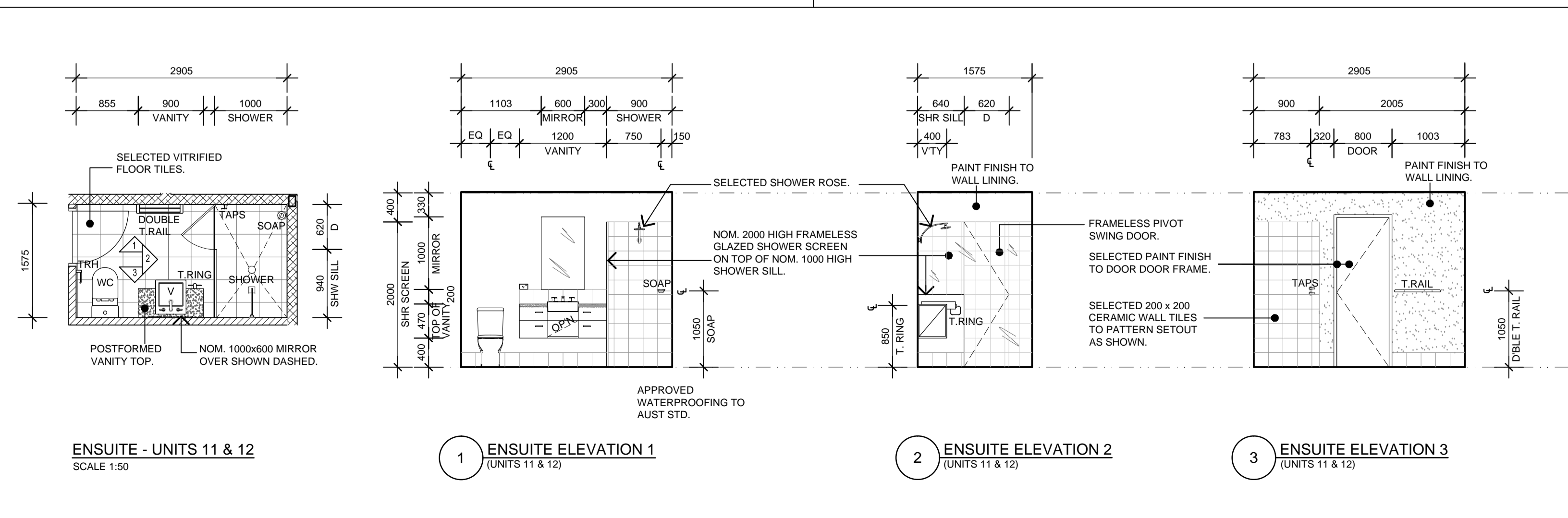
2 LAUNDRY ELEV. 2  
UNITS 11



KITCHEN - UNIT 12  
SCALE 1:20

1 KITCHEN ELEVATION 1  
UNIT 9

2 KITCHEN ELEV. 2  
UNIT 9



ENSUITE - UNITS 11 & 12  
SCALE 1:50

1 ENSUITE ELEVATION 1  
(UNITS 11 & 12)

2 ENSUITE ELEVATION 2  
(UNITS 11 & 12)

3 ENSUITE ELEVATION 3  
(UNITS 11 & 12)



61 Forrest St, Subiaco Western Australia 6008  
PO Box 308 Subiaco WA 6904  
T + 61 8 9388 2281 F + 61 8 9388 3162  
License No. 2038 E admin@doepelmarsh.com.au  
ABN 73 883 655 197 W www.doepelmarsh.com.au

Project Name  
**RESIDENTIAL DEVELOPEMENT**

**50 MORGAN ST**  
**PORT HEDLAND**

Title  
**ROOM LAYOUTS - UNITS 9 - 12 (STAGE 2)**

Scale	Date		
1:50	AUGUST 2011		
Drawn	Checked	Coord.	Approved
VS	---	KD	
Project Number	Drawing Number	Issue	
10.47	A521	CT	

DO NOT SCALE FROM THIS DRAWING. THIS DRAWING IS FOR READING PURPOSES ONLY.

© Copyright. THIS DRAWING REMAINS THE PROPERTY OF DOEPEL MARSH ARCHITECTS PTY. LTD. AND SHALL NOT BE COPIED OR USED WITHOUT PRIOR WRITTEN AUTHORISATION.